



LORNA LOCKHART DESIGNS

A PASSION FOR DESIGN

404-446-6299

# TABLE OF CONTENTS



CARVER & ASSOCIATES  
HOSPITALITY CONTRACT SERVICES

PAGE  
03



PAGE  
14



PAGE  
06



PAGE  
15



PAGE  
10



PAGE  
17



PAGE  
13



LORNA LOCKHART DESIGNS

PAGE  
31



CLIENT INFORMATION

**Hampton Inn & Suites**  
Columbia, SC

PROJECT DESCRIPTION

Hospitality Design: a new build project involving combined custom and prototypical brand standard designs. Fully managed project from concept to completion.



DRAWING INDEX

TYPE	DESCRIPTION	NOTES
D-1.1	OVERALL FIRST FLOOR KEY PLAN	-
D-1.2	OVERALL TYPICAL UPPER FLOOR KEY PLAN (2ND-4TH)	-
D-1.3	ENLARGED PUBLIC SPACE FURNITURE & KEY PLAN	LOBBY PENDANTS ADDED
D-1.4	ENLARGED PUBLIC SPACE FURNITURE & KEY PLAN	ADMR SHELL REVISION
D-1.5	ENLARGED PUBLIC SPACE FURNITURE & KEY PLAN	FITNESS & P.K. SHELL REVISION
D-1.6	ENLARGED POOL FURNITURE & KEY PLAN	-
D-1.7	ENLARGED FITNESS PLAN	-
D-2.1	ENLARGED PUBLIC SPACE WALL FINISH PLAN	-
D-2.2	ENLARGED PUBLIC SPACE WALL FINISH PLAN	-
D-2.3	ENLARGED PUBLIC SPACE WALL FINISH PLAN	-
D-2.4	ENLARGED PUBLIC SPACE FLOOR FINISH PLAN	-
D-2.5	ENLARGED PUBLIC SPACE FLOOR FINISH PLAN	-
D-2.6	ENLARGED PUBLIC SPACE FLOOR FINISH PLAN	-
D-2.7	ENLARGED PUBLIC SPACE FLOOR FINISH PLAN	-
D-2.8	ENLARGED PUBLIC SPACE FLOOR FINISH PLAN	-
D-2.9	ENLARGED PUBLIC SPACE FLOOR FINISH PLAN	-
D-2.10	ENLARGED PUBLIC SPACE ELEVATIONS	-
D-2.11	ENLARGED PUBLIC SPACE ELEVATIONS	-
D-2.12	ENLARGED PUBLIC SPACE ELEVATIONS	-
D-2.13	ENLARGED PUBLIC SPACE ELEVATIONS	-
D-2.14	ENLARGED PUBLIC SPACE ELEVATIONS	-
D-2.15	ENLARGED PUBLIC SPACE ELEVATIONS	-
D-2.16	ENLARGED PUBLIC SPACE ELEVATIONS	-
D-2.17	ENLARGED PUBLIC SPACE ELEVATIONS	-
D-2.18	ENLARGED PUBLIC SPACE ELEVATIONS	-

NOT FOR CONSTRUCTION - DESIGN INTENT ONLY





CLIENT INFORMATION

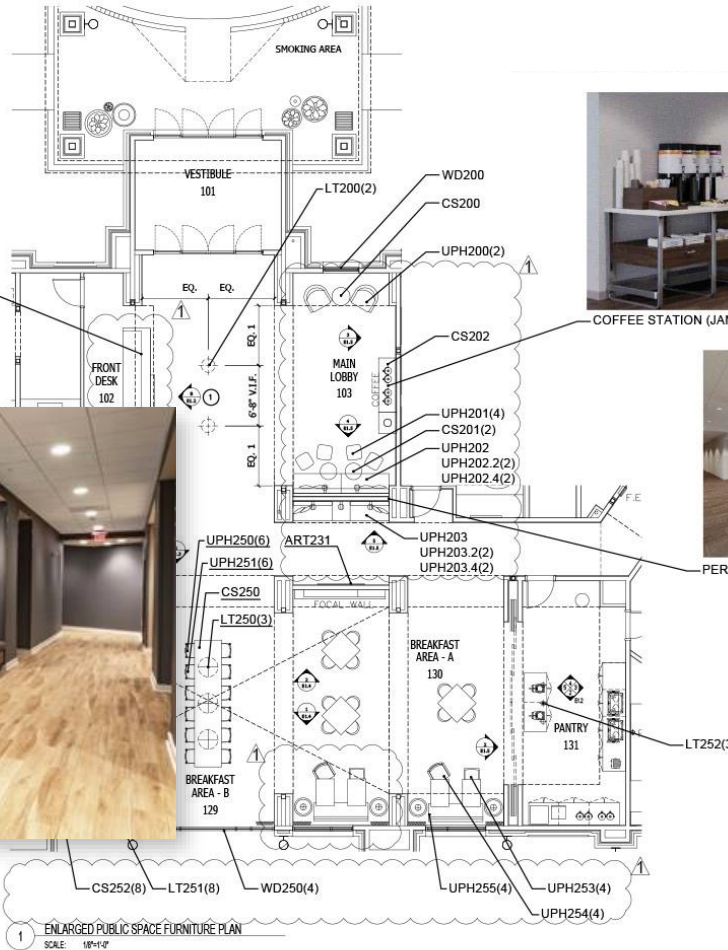
**Hampton Inn & Suites**  
Columbia, SC

PROJECT DESCRIPTION

Hospitality Design: a new build project involving combined custom and prototypical brand standard designs. Managed project from concept to completion.



FRONT DESK (JANUARY 2018)



COFFEE STATION (JANUARY 2018)



PERCH BANQUETTE SIDE (JANUARY 2018)





CLIENT INFORMATION

**Hampton Inn & Suites**  
Columbia, SC

PROJECT DESCRIPTION

Hospitality Design: a new build project involving combined custom and prototypical brand standard designs. Fully managed project from concept to completion.

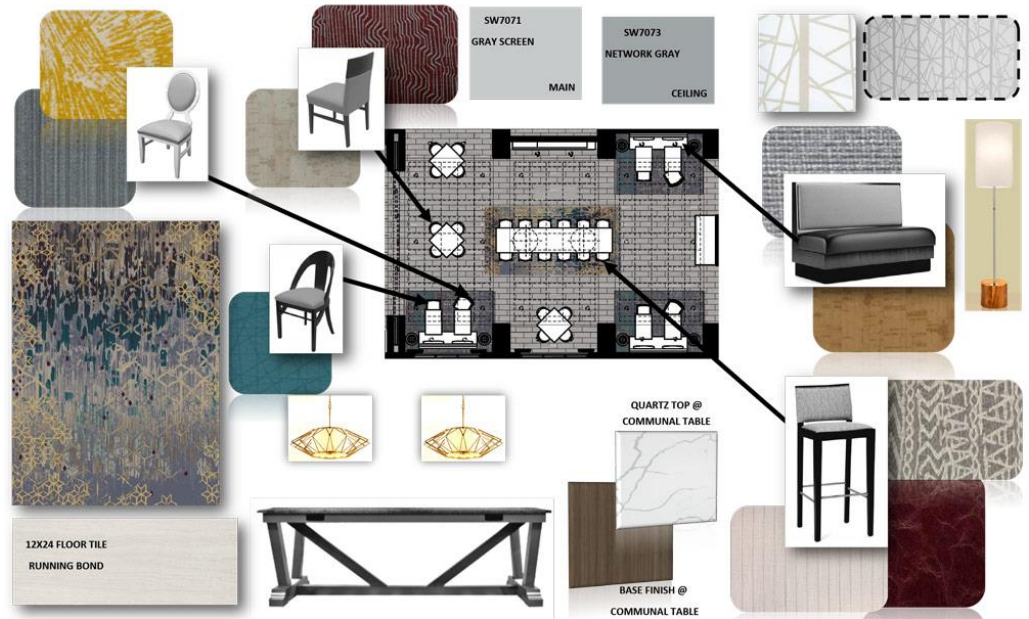
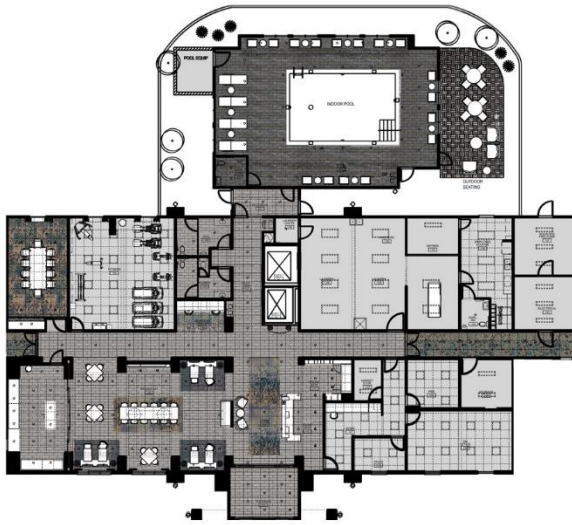


CLIENT INFORMATION

**Hampton Inn**  
 Santa Maria, California

PROJECT DESCRIPTION

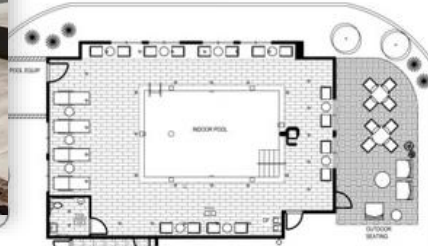
A Hospitality Design: a new build project involving combined custom and prototypical brand standard designs. Fully managed project from concept to completion.





**Hampton Inn**  
Santa Maria, California

Hospitality Design: a new build project involving combined custom and prototypical brand standard designs. Fully managed project from concept to completion.





CLIENT INFORMATION

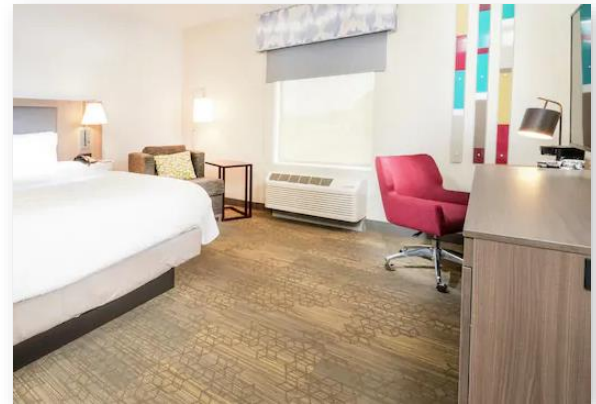
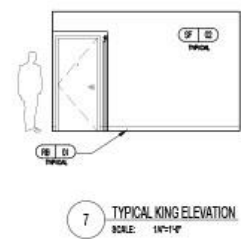
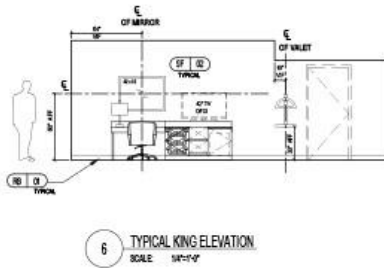
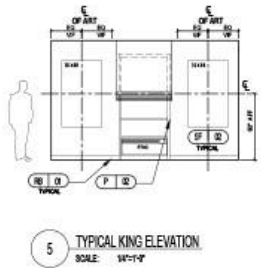
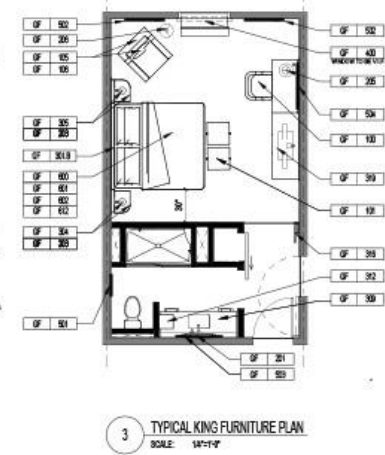
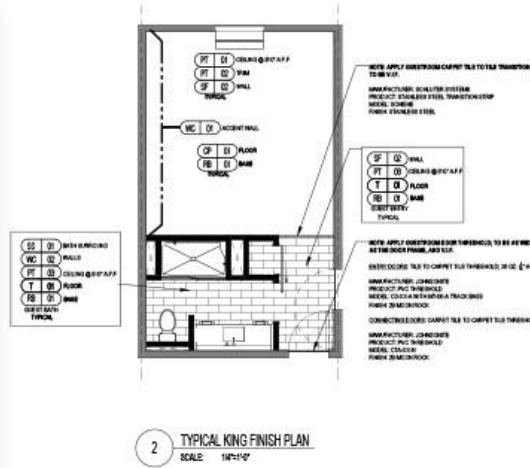
**Hampton Inn**  
Santa Maria, California

PROJECT DESCRIPTION

Hospitality Design: a new build project involving combined custom and prototypical brand standard designs. Fully managed project from concept to completion.





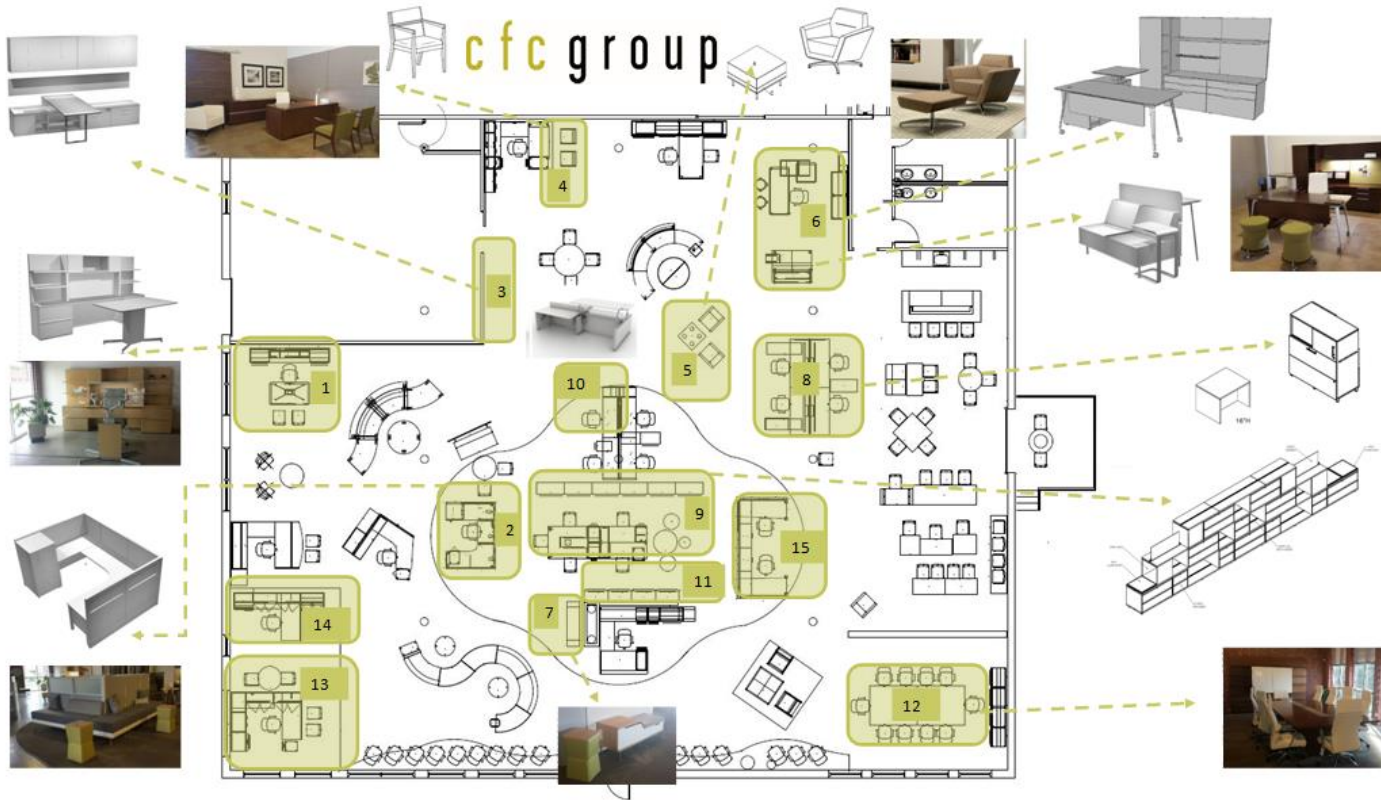


CLIENT INFORMATION

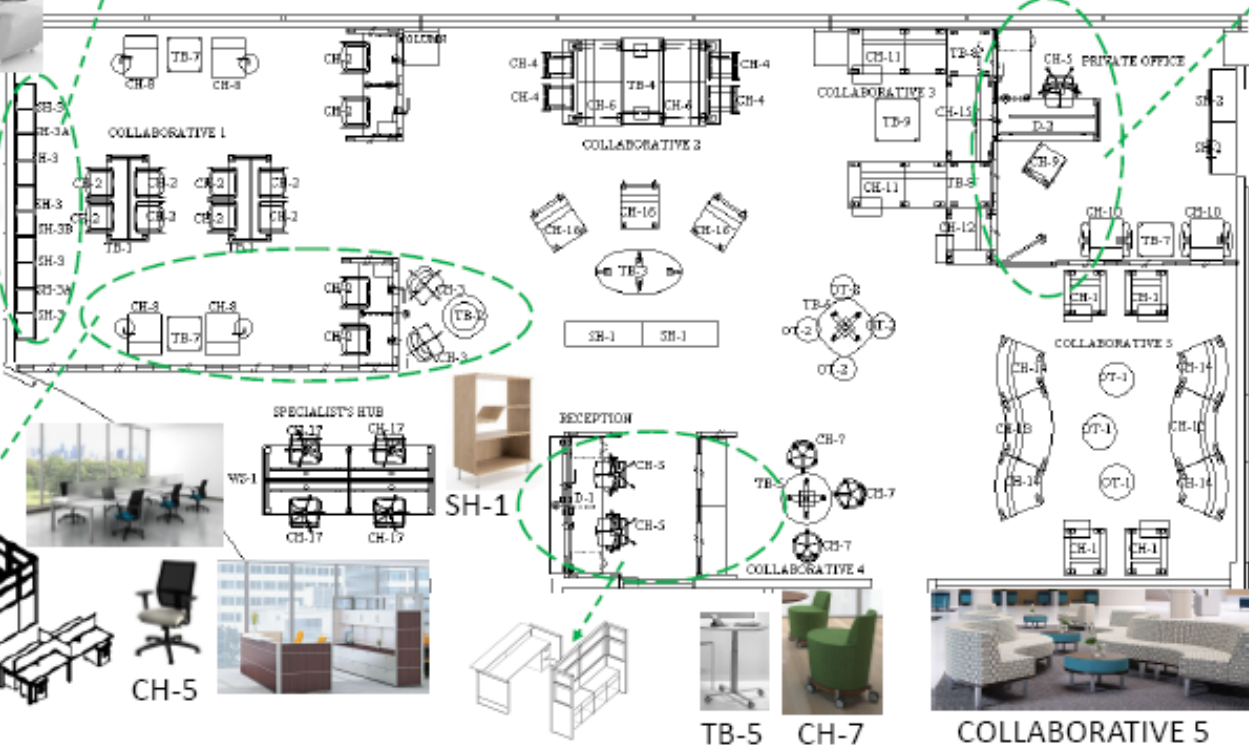
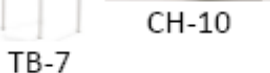
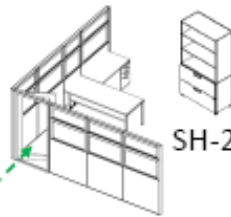
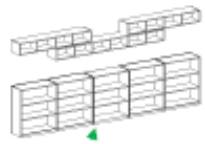
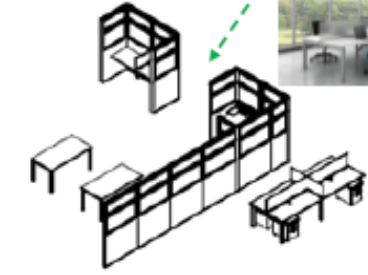
**CFC Group Showroom**  
Atlanta, Georgia

PROJECT DESCRIPTION

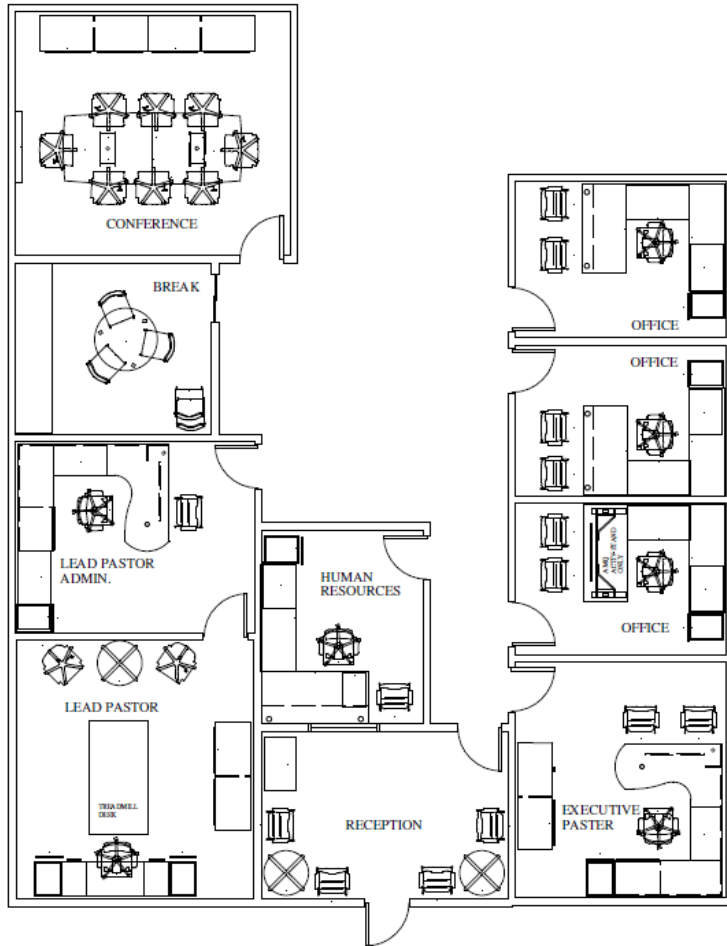
Commercial Showroom FF&E Design: worked with the CFC Group team and manufactures to continue to update the showroom floor with aesthetically pleasing product. Provided updated CAD & 2020 Designer plans for A+D Higher Education and Hospitality projects. Project management included finishes, specifications, purchase orders, receiving, overseeing installation, and maintaining inventory.



MANU	DISASSEMBLE	ACTION	INSTALL	PO #	ORDER	SHIP DATE	SHIP TO	RECD DATE	INTALL DATE
JSI	Broadway Casegoods	PICKUP -Carlie Motes	Showcase 1	CFC031215-01 R2	263698	05/15/15	OFIS		
AIS	Divi Workstation	PICKUP -Bill Finsleyson	Showcase 2	CFC020415-01	441322	03/03/15	OFIS	03/05/15	03/30/15
AIS	Divi Mobile Ped	PICKUP -Bill Finsleyson	Showcase 2	CFC020415-01	441341C	03/06/15	OFIS	03/05/15	03/30/15
AIS	Divi Wardrobe Tower (REORDERED-WRONG SIDE)	PICKUP -Bill Finsleyson	Showcase 2	CFC020415-01	441355	04/03/15	OFIS	04/15/15	04/20/15
AIS	Divi - Damaged Panel & Elec Caps	ARRANGE AIS PICKUP	Showcase 2	CFC020415-01	452290	06/26/15	OFIS	06/29/15	07/20/15
AIS	REORDERED Divi Wardrobe Tower	ORIS STORAGE/SALES	Showcase 2	CFC020415-01	452290	06/26/15	OFIS	06/29/15	07/20/15







**CONFERENCE**



IDESK CURVA CONFERENCE CHAIRS



**BREAK ROOM**

IDESK STACKABLE CHAIRS



**RECEPTION/HUMAN RES & WAITING**

IDESK OROBLANCO TASK



IDESK CURVINNA GUEST



IDESK TI KAL UPH OLSTERED CHAIRS & CURVA TABLE



Available upholstery:  
  
 Carberry with shell system 2020

VERDE TWO DOOR CABINET:  
COFFEE AND/OR LITERATURE STATION



CHERRYMAN idesk  
 cfc group

**SPECIAL OFFICES**



IDESK OROBLANCO TASK



IDESK CURVA LOUNGE & TABLE



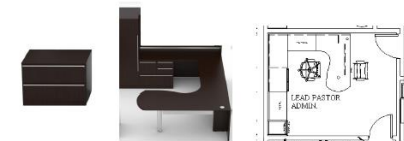
VERDE DESK TOP & MODESTY ONLY



IDESK CURVINNA GUEST



**OFFICES**



IDESK OROBLANCO TASK



IDESK CURVINNA GUEST



## CLIENT INFORMATION

**Emory Executive Health  
& University**  
Atlanta, Georgia

## PROJECT DESCRIPTION

Worked with the directors of Emory's Executive Health division to design a new space for this exclusive branch of the Emory Clinic. Completion of this project involved using Revit, AutoCAD, Onsite Surveying, FF&E Specifications, Client Presentations, Project Schedule Management, RFP Procurements, AIA Project Documentation, and full accounting services.



CLIENT INFORMATION

**Ibis Walk**  
St. Petersburg, FL

PROJECT DESCRIPTION

Multi-Family New Build: a new construction project located in St. Petersburg, FL outside of Tampa. Example of full scope branding with interiors and marketing on the entire project. Completion of this project involved using AutoCAD, Onsite Surveying, Hand & digital Renderings, FF&E Specifications, Client Presentations, Project Schedule Management, Budgets and Proposals.



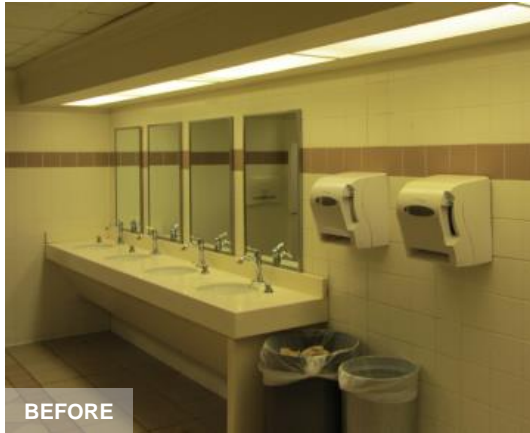


CLIENT INFORMATION

**Macy's Lenox Square**  
Atlanta, Georgia

PROJECT DESCRIPTION

Retail Renovation: expanded Women's Shoes, multiple department relocations, replaced all dated flooring, ceilings, fitting room complexes, and ADA upgrades. Services provided include: Full survey of affected areas, Merchandise plans, Ceiling profile and configurations, Demolition Plans, Fixture specifications, Door schedule, Partition Plans, Power and Signal Plans, Coordinated Architecture and Engineering Plans, Floor Covering Plans, Wall Types and Details, Elevations / Selection and Details, Color Materials Specifications and Sample Books.



CLIENT INFORMATION

**Macy's Memorial City Mall**  
Houston, Texas

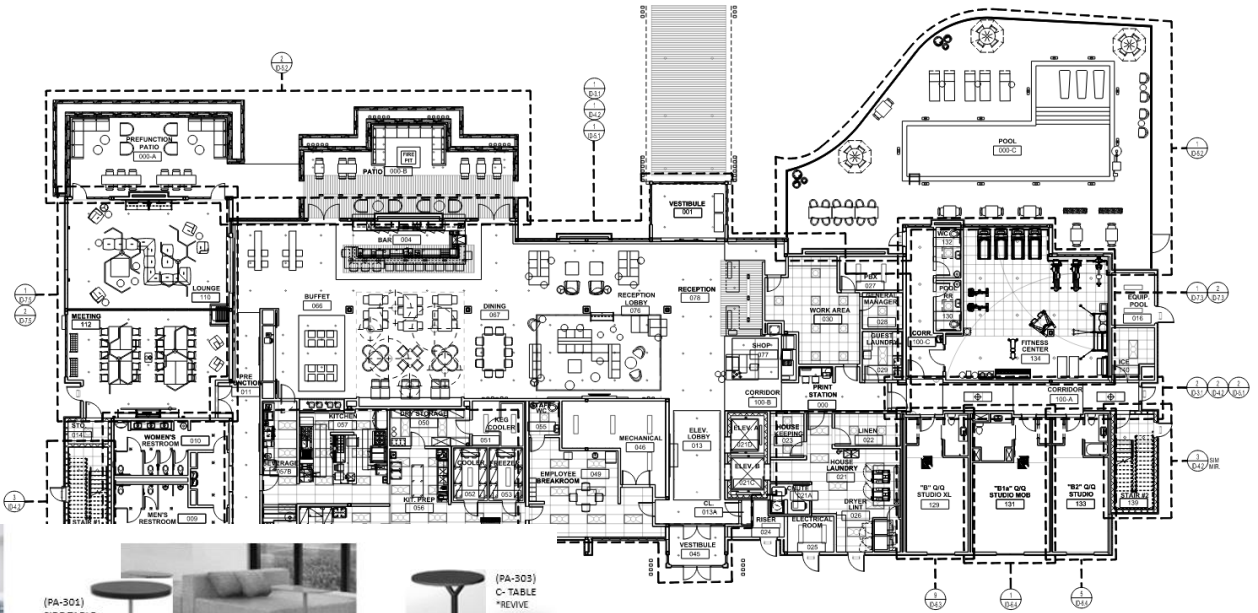
PROJECT DESCRIPTION

Retail Renovation: expanded Women's Shoes; Relocated Accessories, Handbags and Women's Wear; New Carpets and Hard Flooring; T-Wall Eliminated, Light Revisions, Expand Luggage and Reduced Home. Services provided include: Full survey of affected areas, Merchandise plans, Lighting and Electrical Plans, Floor Covering Plans, Wall Types and Details, Elevations / Selection and Details, Color Materials Specifications and Sample Books.



**Hilton Garden Inn**  
**Phillips Partnership**  
Florence, KY

Hospitality Design: a new build project, modified prototypical brand standard design. Fully managed project from concept to now currently in the stage of construction administration.



(PA-501)  
54 x 36 - WRAPPED CANVAS ARTWORK @ FOCAL WALL  
\*DESIGNER CHOICE (INSPIRATION: TURFWAY PARK)



(PA-400)  
WINDOW ROLLERSHADE  
\*BLOOM/REVIVE SCHEME



(PA-200)  
FLOOR LAMP  
\*REVIVE SCHEME



(PA-105)  
LARGE LOUNGE CHAIR  
\* REVIVE SCHEME  
\* \*MODIFIED FABRIC



(PA-301)  
SIDE TABLE  
\*REVIVE  
TOP  
BASE



(PA-106)  
DOUBLE SIDED  
SECTIONAL SOFA  
\*REVIVE SCHEME  
\*MODIFIED FABRIC



(PA-302) SQUARE TABLE  
@ SECTIONAL SOFA  
\*BLOOM / REVIVE SCHEME  
\*FINISH AS SHOWN



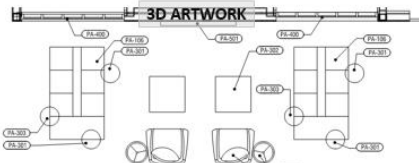
(PA-303)  
C-TABLE  
\*REVIVE  
TOP  
BASE



CHAIR  
FABRIC  
WOOD FINISH



(PA-106.1)  
PILLOW @ SOFA  
\* MODIFIED FABRIC



ENLARGED LOBBY FLOOR PLAN



P-05  
OVERALL PAINT

T-03  
MAIN  
FLOOR TILE

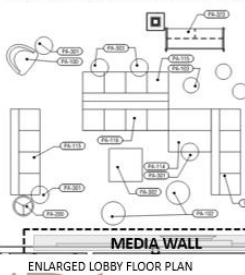
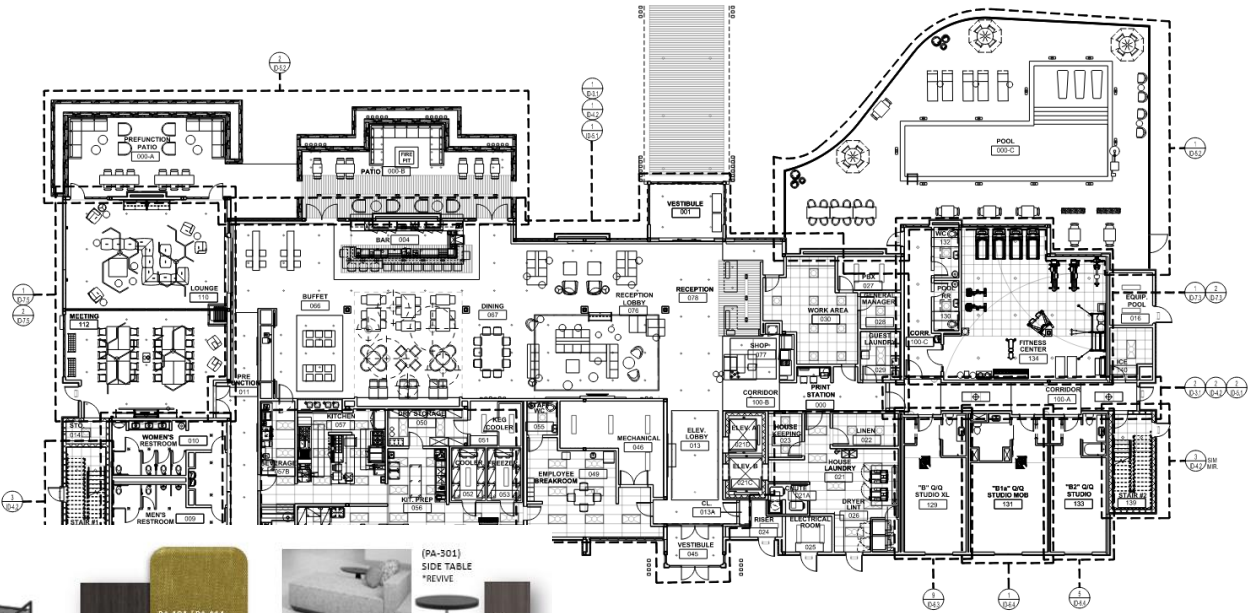


BLOOM SCHEME FINISHES PHOTO (UNLESS NOTED)



**Hilton Garden Inn**  
**Phillips Partnership**  
 Florence, KY

Hospitality Design: a new build project, modified prototypical brand standard design. Fully managed project from concept to now currently in the stage of construction administration.

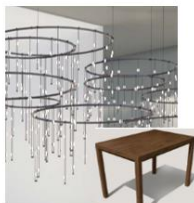
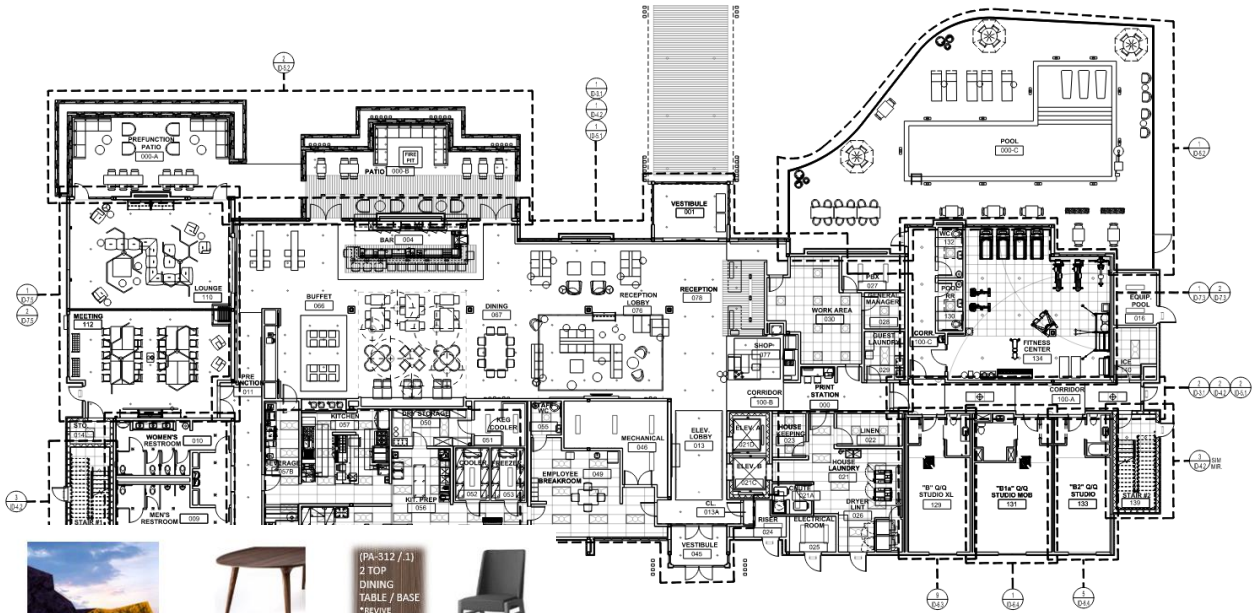


P-05 OVERALL PAINT



**Hilton Garden Inn**  
**Phillips Partnership**  
 Florence, KY

Hospitality Design: a new build project, modified prototypical brand standard design. Fully managed project from concept to now currently in the stage of construction administration.



(PA-202/203/204)  
 MULTI SIZE RING CHANDELER  
 \*BLOOM / REVIVE  
 \*FINISH AS SHOWN



(PA-111 / PA-112)  
 BAR / COUNTER STOOLS  
 \*REVIVE SCHEME  
 \*MODIFIED FABRIC



(PA-111 / PA-112)  
 BACK FABRIC  
 (PA-111 / PA-112)  
 SEAT FABRIC



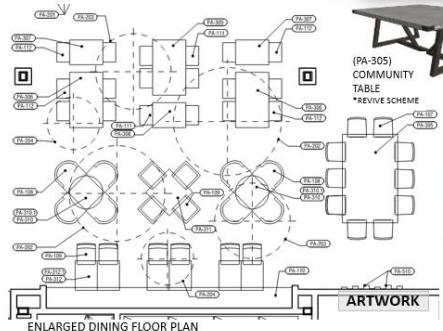
(PA-510)  
 66 x 96 - DIMENSIONAL ARTWORK  
 \*DESIGNER CHOICE OPTION 1 (INSPIRATION: BOONE COUNTY CLIFFS NATURE PRESERVE IN AUTUMN)



(PA-311)  
 ADA DINING TABLE  
 \*REVIVE SCHEME



(PA-312 / 1)  
 2 TOP DINING TABLE / BASE  
 \*REVIVE



ENLARGED DINING FLOOR PLAN  
 ARTWORK



(PA-305)  
 COMMUNITY TABLE  
 \*REVIVE SCHEME



(PA-107)  
 COUNTER STOOL @ COMM TABLE  
 \*REVIVE SCHEME  
 \*MODIFIED FABRIC



WALL CUT OUT PATTERN COLOR



INSTALL PHOTO INSPIRATION



T-05B ACCENT TILE  
 P-05 MAIN PAINT  
 B-03 BASE



WALL CUT OUT PATTERN COLOR  
 P-06 ACCENT PAINT BEHIND CUT OUT  
 SF-04 DECO ART ABOVE BANQUETTE \*DESIGNER CHOICE



(PA-310 / 1)  
 ROUND DINING TABLE / BASE  
 \*REVIVE



(PA-109) TYP. DINING CHAIR  
 \*REVIVE SCHEME  
 \*MODIFIED FABRIC



(PA-108)  
 LOUNGE DINING CHAIR @ ROUND TABLES  
 \*BLOOM SCHEME  
 \*MODIFIED FABRIC



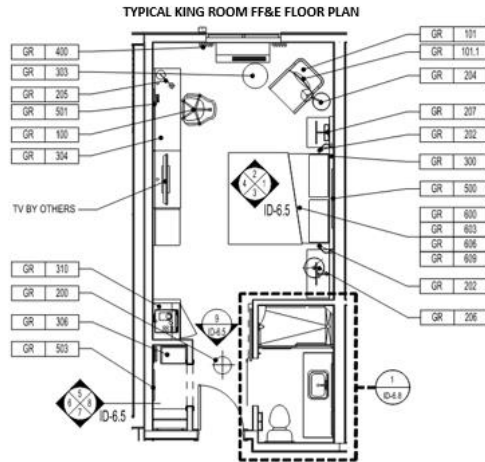
(PA-110)  
 BANQUETTE \*REVIVE SCHEME  
 \*MODIFIED FABRIC



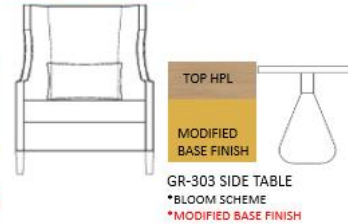
BANQ. BACK FABRIC  
 BANQ. SEAT FABRIC



(PA-110.1 / PA-110.2)  
 PILLOWS  
 \*REVIVE SCHEME  
 \*MODIFIED FABRIC



GR-101 LOUNGE CHAIR  
\*MODIFIED SEAT INTERIOR/  
SELF WELT FABRIC  
\*MODIFIED OUTSIDE SEAT FABRIC



\*MODIFIED BENCH FABRIC



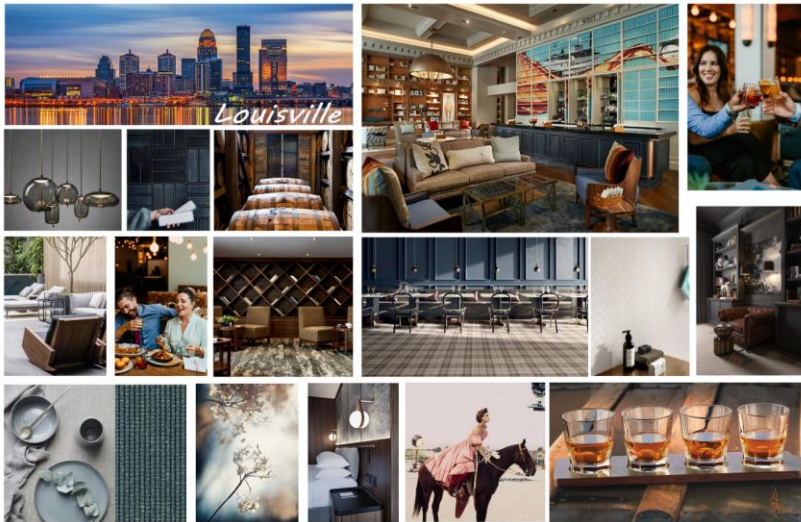
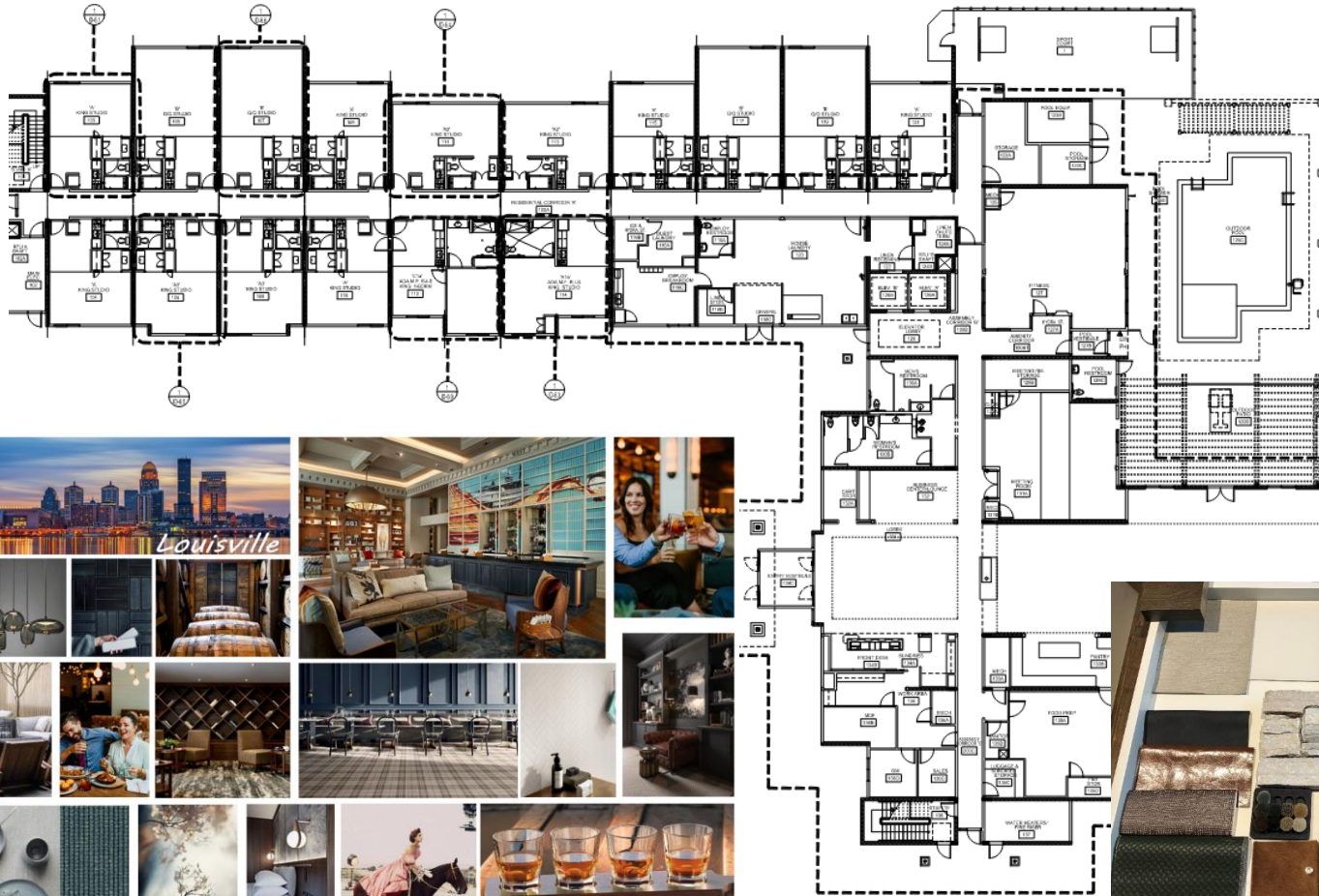


CLIENT INFORMATION

**Homewood Suites  
Phillips Partnership**  
Louisville, KY

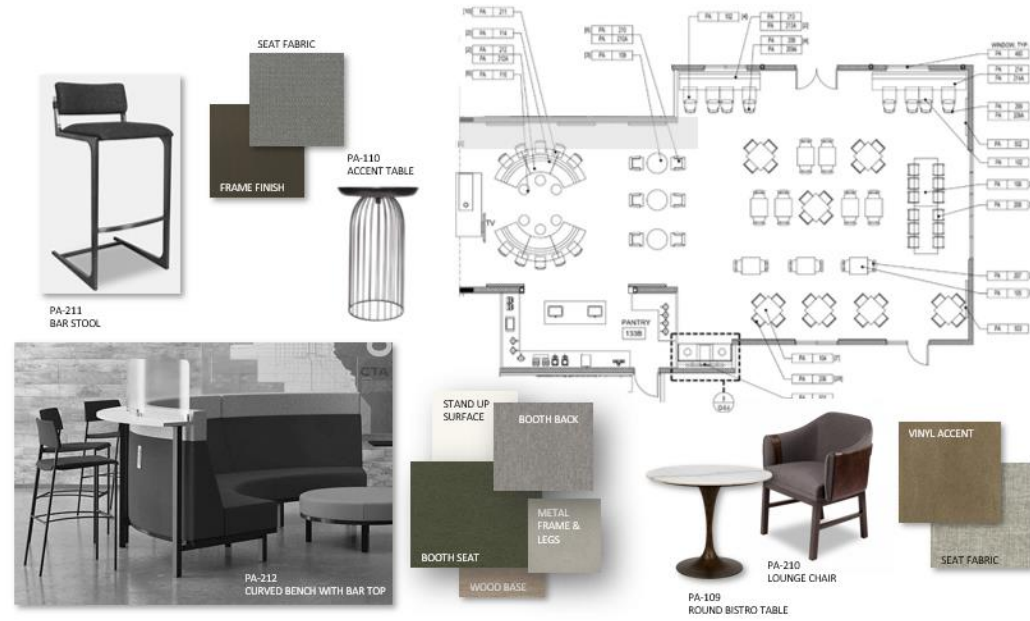
PROJECT DESCRIPTION

Hospitality Design: a new build project, custom design while maintaining brand standard requirements. Fully managed project from concept to now currently in the stage of construction administration.



**Homewood Suites  
Phillips Partnership**  
Louisville, KY

Hospitality Design: a new build project, custom design while maintaining brand standard requirements. Fully managed project from concept to now currently in the stage of construction administration.



PA-213 / PA-214  
LINEAR BANQUETTE



PA-102A  
24x28 X 30H  
DINING TABLE



SEAT FABRIC  
BACK FABRIC



PA-209A/B  
DINING CHAIR



PA-212  
CURVED BENCH WITH BAR TOP



STAND UP SURFACE  
BOOTH BACK  
BOOTH SEAT  
METAL FRAME & LEGS  
WOOD BASE



PA-210  
LOUNGE CHAIR



VINYL ACCENT  
SEAT FABRIC



PA-206  
DINING CHAIR A  
\*FABRIC AS SHOWN



PA-104A - 36x36 DINING TABLE &  
PA-105A - 30x32 DINING TABLE



PA-207 SEAT  
VINYL



PA-207  
DINING CHAIR B

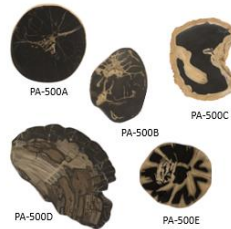
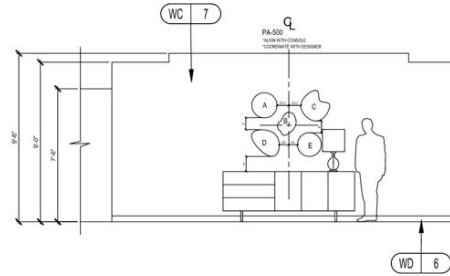


PA-106  
COMMUNITY TABLE

PA-208 SEAT  
VINYL



PA-208  
COUNTER STOOL



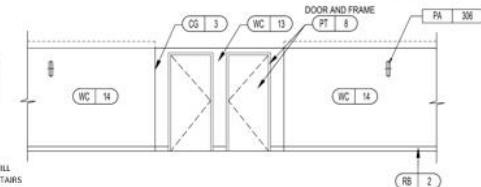
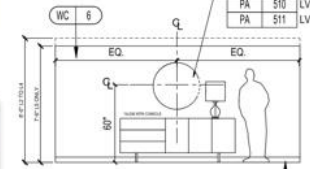
PA-500A / B / C / D / E  
DIMENSIONAL ART @  
ELEVATOR LOBBY L-1



PA-107 CONSOLE



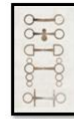
PA	508	LVL 2
PA	509	LVL 3
PA	510	LVL 4
PA	511	LVL 5



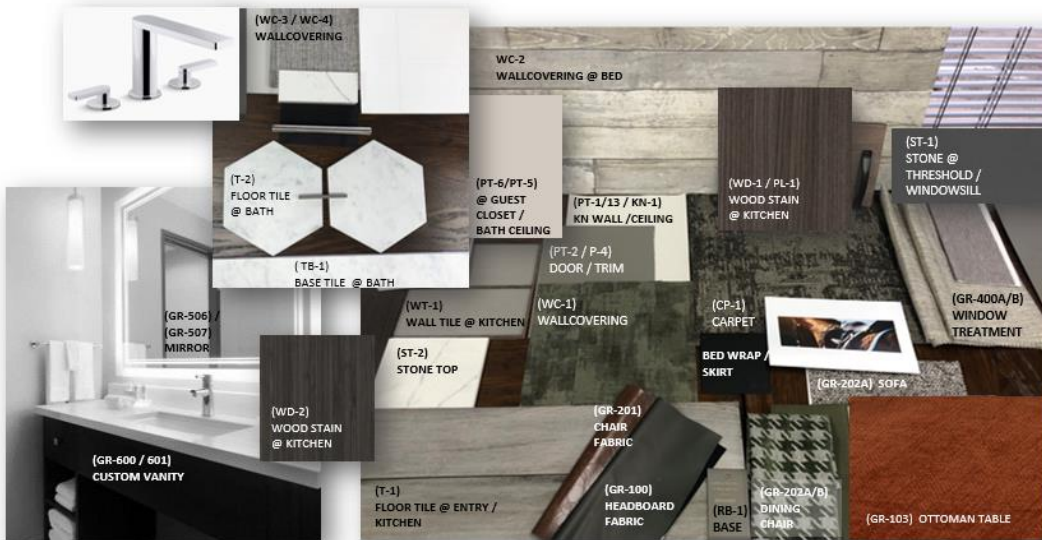
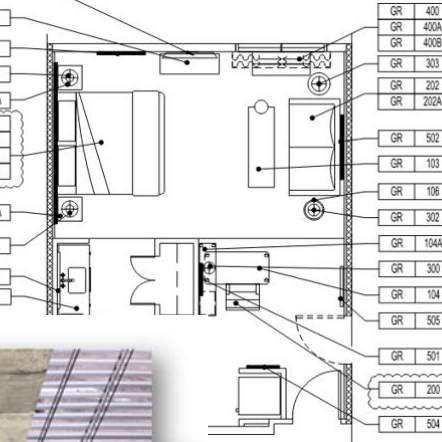
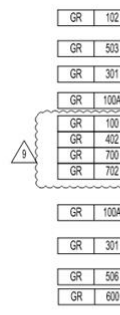


**Homewood Suites  
Phillips Partnership**  
Louisville, KY

Hospitality Design: a new build project, custom design while maintaining brand standard requirements. Fully managed project from concept to now currently in the stage of construction administration.



TV BY OTHERS



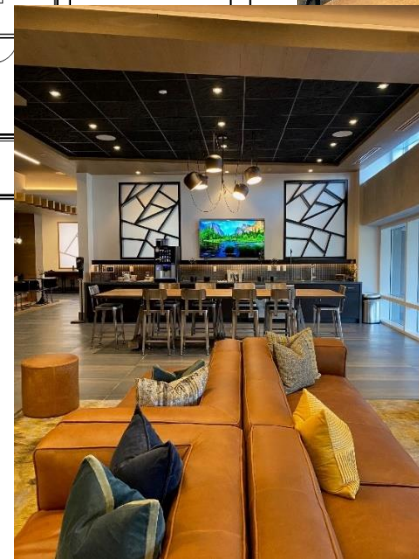
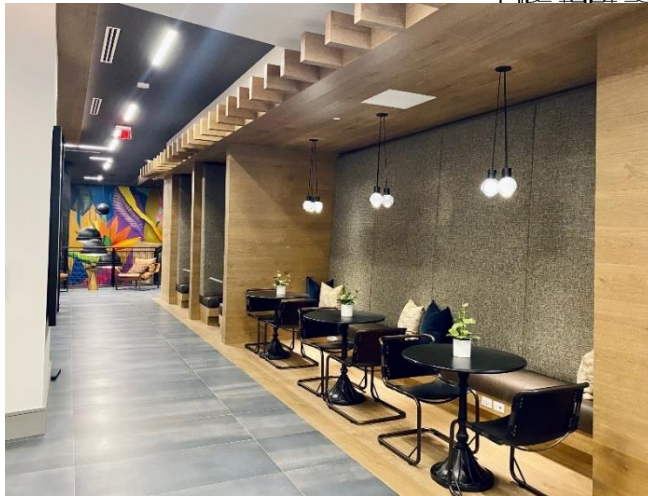
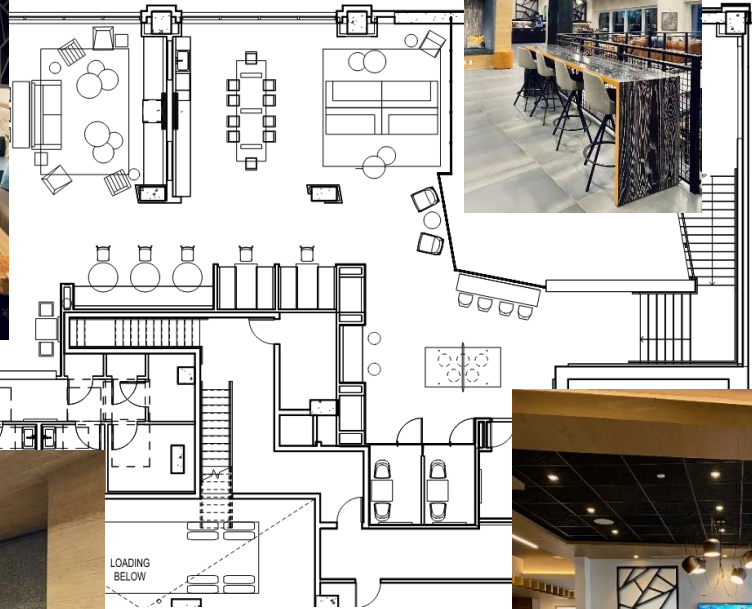


CLIENT INFORMATION

**Stiles**  
Novo Las Olas, FL

PROJECT DESCRIPTION

Multi-Family New Build: a new built project FF&E Design and Installation of Amenity Areas and Model Units.



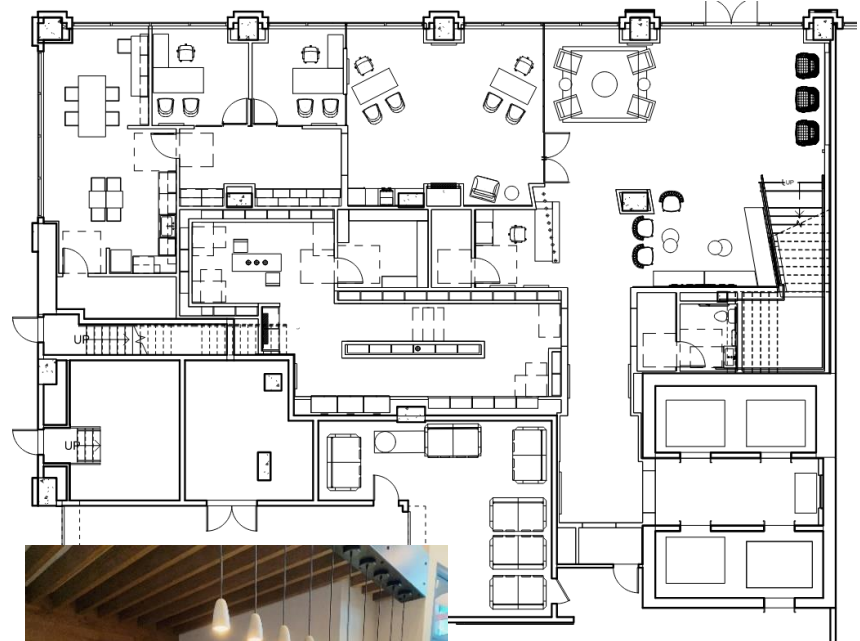


CLIENT INFORMATION

**Stiles**  
Novo Las Olas, FL

PROJECT DESCRIPTION

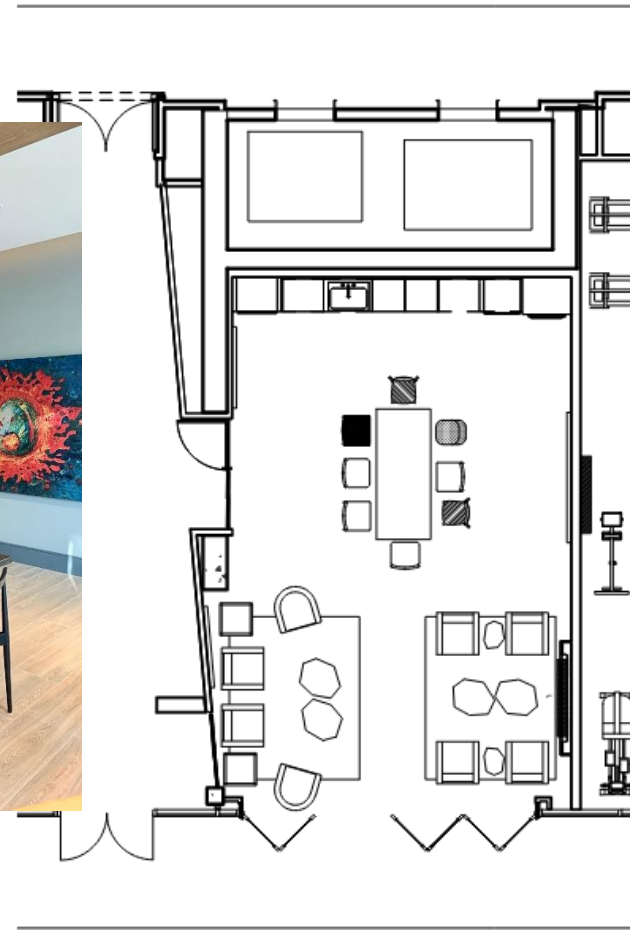
Multi-Family New Build: a new built project FF&E Design and Installation of Amenity Areas and Model Units.





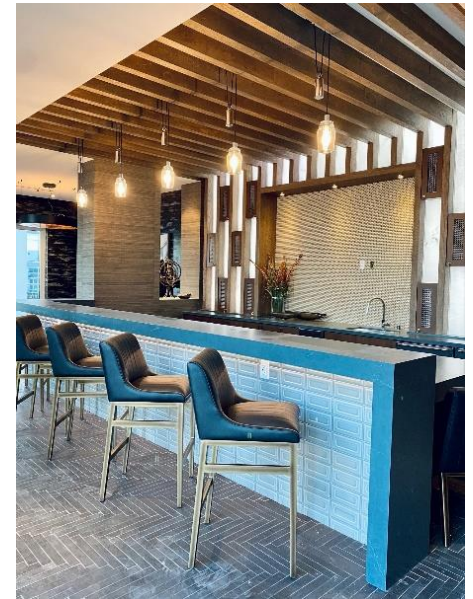
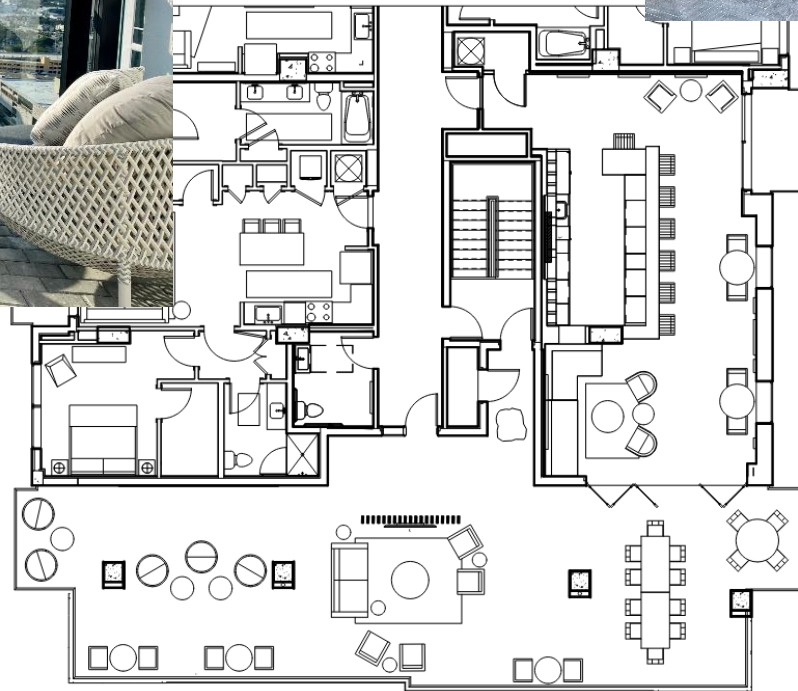
**Stiles**  
Novo Las Olas, FL

Multi-Family New Build: a new built project FF&E Design and Installation of Amenity Areas and Model Units.



**Stiles**  
Novo Las Olas, FL

Multi-Family New Build: a new built project FF&E Design and Installation of Amenity Areas and Model Units.





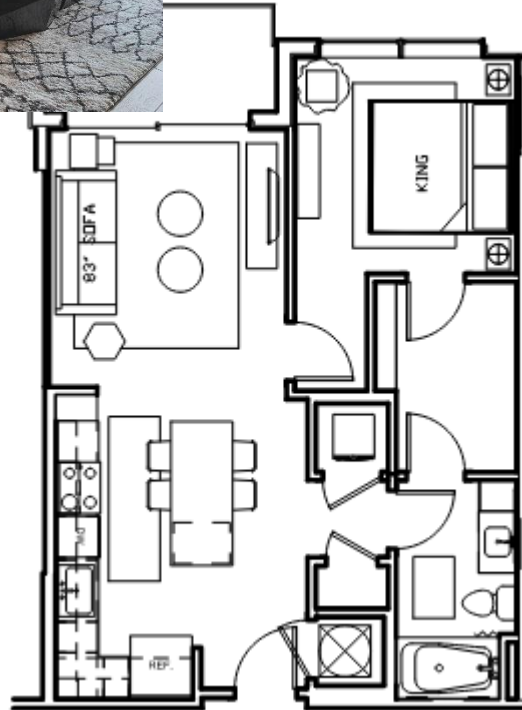
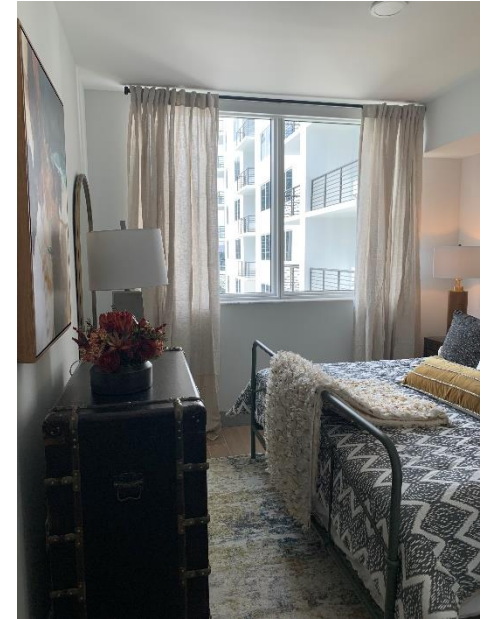


CLIENT INFORMATION

**Stiles**  
Novo Las Olas, FL

PROJECT DESCRIPTION

Multi-Family New Build: a new built project FF&E Design and Installation of Amenity Areas and Model Units.





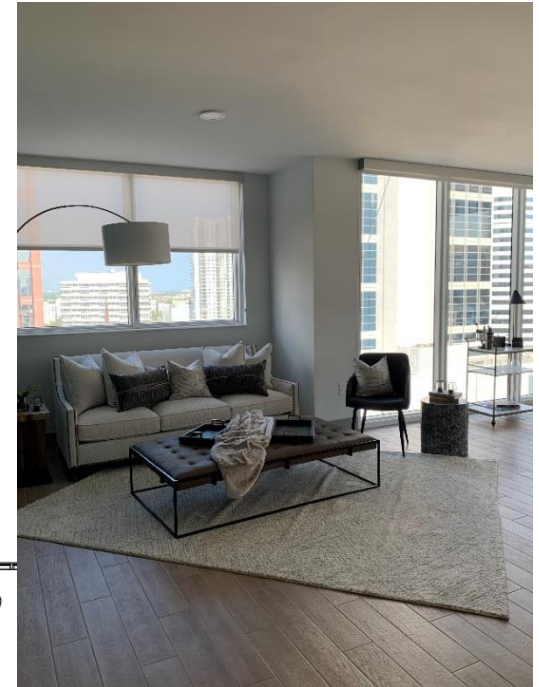


CLIENT INFORMATION

**Stiles**  
Novo Las Olas, FL

PROJECT DESCRIPTION

Multi-Family New Build: a new built project FF&E Design and Installation of Amenity Areas and Model Units.



CLIENT INFORMATION

Acadia Homes & Neighborhoods  
Norcross, Georgia

PROJECT DESCRIPTION

Single Family Residence Kitchen Renovation: FF&E and Finish Specifications, and construction installation.

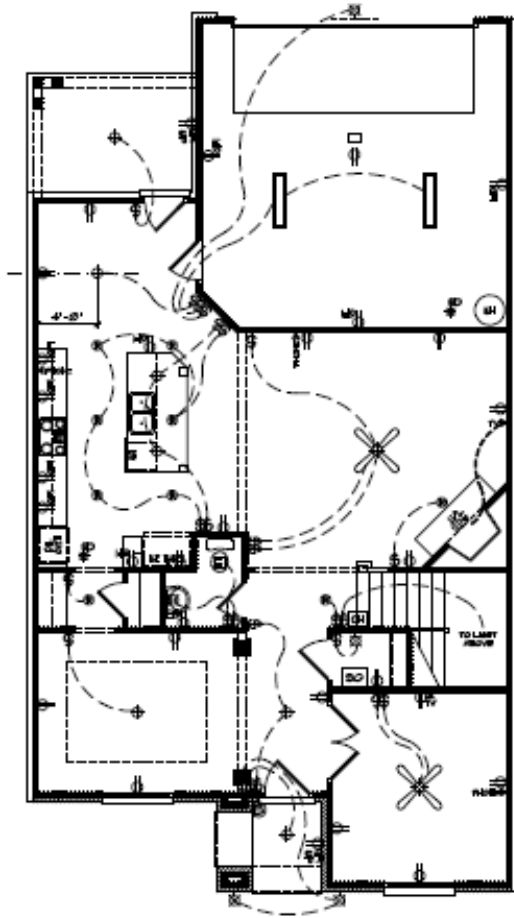


CLIENT INFORMATION

**Acadia Homes & Neighborhoods**  
Smyrna, Georgia

PROJECT DESCRIPTION

Single Family Residence Kitchen New Construction: FF&E and Finish Specifications, and construction installation.



**1ST ELECTRICAL PLAN**  
 1st Fl. SCALE: 1/8" = 1' - 0"  
 2nd Fl. SCALE: 1/4" = 1' - 0"







Thank you for taking the time to review my portfolio. I look forward to hearing back from you!

 LORNA LOCKHART DESIGNS

404.446.6299

[lornalizlockhart@gmail.com](mailto:lornalizlockhart@gmail.com)  
[linkedin.com/in/lorna-liz-lockhart](https://www.linkedin.com/in/lorna-liz-lockhart)